



Excellence in **the New Normal**

2010 APICS International Conference & Expo

October 18-20, 2010 • Las Vegas, Nevada, USA

# Decoding APICS ASC: WIIFM and HCIH?

Presented by Karen Eboch, CSCP  
Bowling Green State University Faculty Advisor  
Toledo, OH Chapter

# Agenda

- What are all these acronyms?
- What's needed for a successful APICS student chapter?
- Who am I? Why should I care?
- What's my part in making the chapter a success?
- What do I get in return?
- What's next?



Excellence in **the New Normal**

Best Practices for Global Supply Chain and Operations Management



# What Are All These Acronyms?

## Decoding APICS, ASC, . . .

APICS ?

- Advancing Productivity, Innovation, and Competitive Success

ASC?

- Affiliated Student Chapters

WIIFM?

- What's in it for me

HCIH?

- How can I help?



Excellence in **the New Normal**

Best Practices for Global Supply Chain and Operations Management

**APICS**  
The Association for  
Operations Management®

# What's Needed For a Successful APICS Student Chapter?

- First . . .  
What do we mean by success?
- Second . . .  
Who will do the work to make it successful?

Students  
Faculty advisor  
Parent chapter support



Excellence in **the New Normal**

Best Practices for Global Supply Chain and Operations Management



# Who Am I? Why Should I Care?

- I'm an APICS Faculty Advisor
- I'm also . . . .

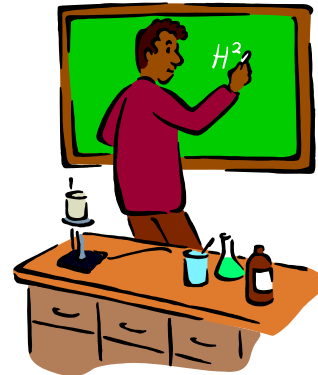
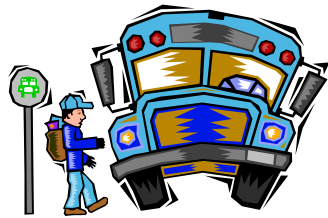


Excellence in **the New Normal**

Best Practices for Global Supply Chain and Operations Management

# Who Are You?

- Student
- Faculty
- Professional Member



# Why do you care?



Excellence in **the New Normal**

Best Practices for Global Supply Chain and Operations Management

# What's My Part in Making the Chapter a Success?

- Develop relationships among all three parties
- Involvement in meetings, Case Competitions, Scholars Programs, etc.
- Planning plant tours and PDMs  
(Professional Development Meetings)
- Recruitment and membership transitions  
(Succession planning)
- Fundraising
- Advertising and marketing
- Administration and record keeping



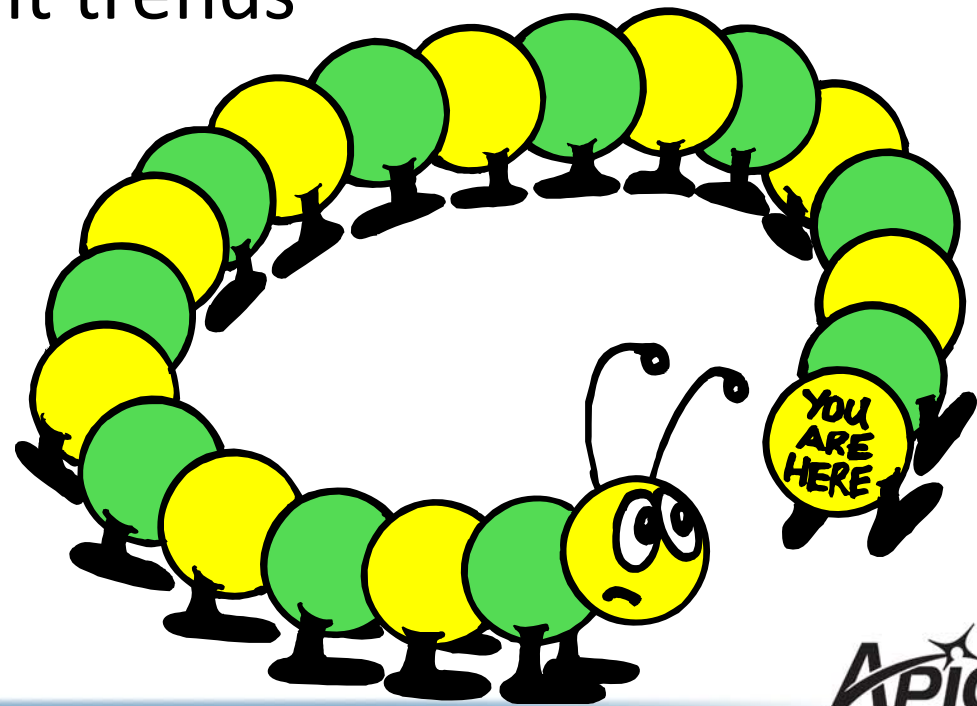
Excellence in **the New Normal**

Best Practices for Global Supply Chain and Operations Management

**APICS**  
The Association for  
Operations Management®

# What do I Get in Return?

- Connections
- Leadership skills
- Learn about current trends
- Travel
- Career assistance



Excellence in **the New Normal**

Best Practices for Global Supply Chain and Operations Management

**APICS**  
The Association for  
Operations Management®

# Guidelines for New ASC Chapters

- Interest of the college/university
- Parent chapter support
- Form a student chapter organizing committee
- Set up and conduct meeting with an APICS representative
- Conduct a general organizing meeting
- Submit documentation for ASC
  - 15 APICS student members required
  - Approved APICS bylaws
  - Board of directors roster



Excellence in **the New Normal**

Best Practices for Global Supply Chain and Operations Management



# Best Practices From Student Chapters

- Gain Corporate sponsorship for events
- Tie membership to “pre-job fair” preview nights
- Local business fundraising (Applebee’s, Max & Erma’s, pump gas, etc)
- Golf outings
- Poker tournaments
- Speaker Wednesday and tour on Friday
- Email announcements to members to make at the start of their classes for events
- Regularly scheduled meetings
- Women on Operations night



Excellence in **the New Normal**

Best Practices for Global Supply Chain and Operations Management



# Additional Ways for Parent Chapters to Help

- Mentorship programs
- “Mock Interviews”
- CPIM condensed courses
- Student presentations at PDMs
- Paper competitions as part of courses (offer to help grade/evaluate)
- Funding travel, scholarships, or seed money to start
- Pay for APICS membership for student board members
- Young Professional Memberships as graduation gift



Excellence in **the New Normal**

Best Practices for Global Supply Chain and Operations Management



# Additional Ways for Faculty Advisors to Help

- Help work through the red-tape
- Mentorship programs
- “Mock Interviews”
- CPIM condensed courses
- Student presentations and papers as part of courses
- Funding travel, scholarships, or seed money to start



Excellence in **the New Normal**

Best Practices for Global Supply Chain and Operations Management



# APICS Publications to Help

APICS Student Membership Brochure and  
Application (Stock #82025)

Student Chapter Management Program (Stock #01024)

APICS Educational Resources Catalog (Stock #01041-1)

Certificates for Membership (Stock #01051)

Certificates for Appreciation (Stock #01058)

APICS Member Benefits for Students (Stock #82021-1)

2009 Chapter Resources Catalog (stock #82032)



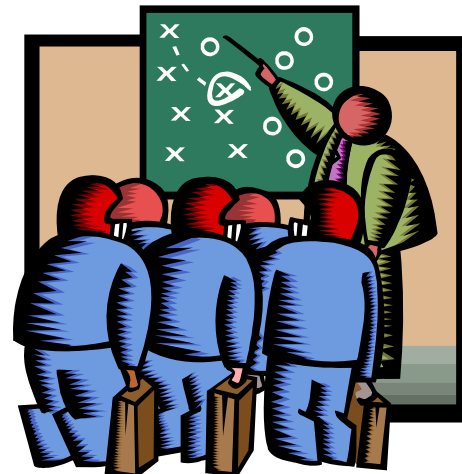
Excellence in **the New Normal**

Best Practices for Global Supply Chain and Operations Management



# Student Chapter Management Program

- Administration
- Education
- Programs
- Membership
- Public relations



Excellence in **the New Normal**

Best Practices for Global Supply Chain and Operations Management

# Additional Resources

## **APICS Corporate Office**

E&R Foundation

foundation@apics.org

(800) 444-2742

District and Chapter Activities

chaprel@apics.org

(800) 444-2742 ext. 2236

## **Jennifer Howe**

APICS Program Manager,  
Student and Chapter Activities

jhowe@apics.org

APICS Web site: [www.apics.org/education](http://www.apics.org/education)



Excellence in **the New Normal**

Best Practices for Global Supply Chain and Operations Management



# Additional Ideas or Questions?

Contact me at

**Karen Eboch**

[eboch@bgsu.edu](mailto:eboch@bgsu.edu)

419.372.2755 (work)



Excellence in **the New Normal**

Best Practices for Global Supply Chain and Operations Management

